

EXHAUSTO

Box Ventilator BESF

Use

The EXHAUSTO BESF Box Ventilator is intended for use as an exhaust or supply air fan. Install the BESF in-line in the duct system. It is specifically designed for applications where reliable and efficient operation, low noise level, low energy consumption, variable speed and compact design are important.

Typical uses are: residential kitchen exhaust and commercial and residential combustion air supply. For indoor installation only.

Description

The EXHAUSTO BESF Box Ventilator is an efficient ventilator with a forward curved impeller. The ventilator housing is made of galvanized steel and insulated with fiberglass mats. The insulation reduces noise level and the risk of condensation.

The BESF is equipped with an energy-efficient, totally enclosed (TEFC), variable speed motor.

A service door provides easy access to the inside of the fan and the duct connections. The motor and impeller are mounted on the door. A locking bolt on the housing secures the door.

The duct connections are slip connections with built-in rubber seals. An optional flexible connection is available.

The ventilator can be mounted on the floor with vibration resistant support legs or from ceiling mounted brackets.

Material

The housing is made of galvanized steel and insulated with 1.25" thick fiberglass mats. The forward inclined impeller is made of 304 SS.

Motor

Commercial grade, totally enclosed, variable speed single-phase motor. Class F insulated with sealed and permanently lubricated ball bearings. Thermal overload protection.



Accessories

Flexible connections, FLF
Proven Draft Switch, PDS
Fan Speed Control, FSC

Listings

ETL listed to UL705 and CSA C22.2 No. 113-M1984, Standard for Power Ventilators
CE compliant
Manufactured at ISO9001 certified plant

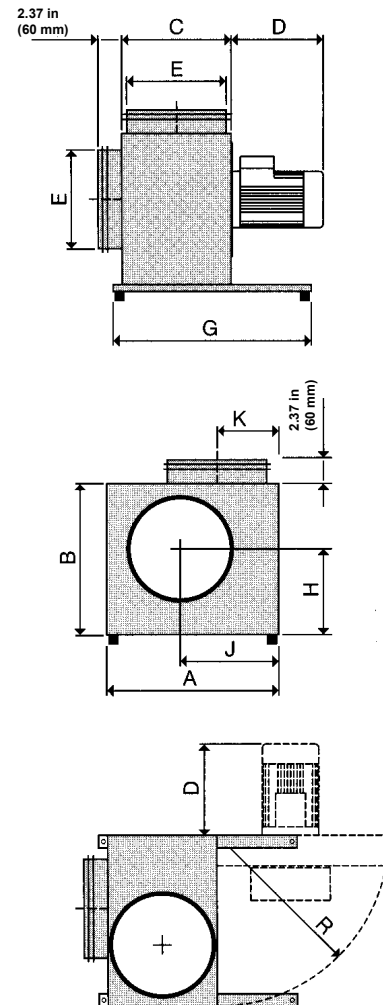
Warranty

2 year factory warranty

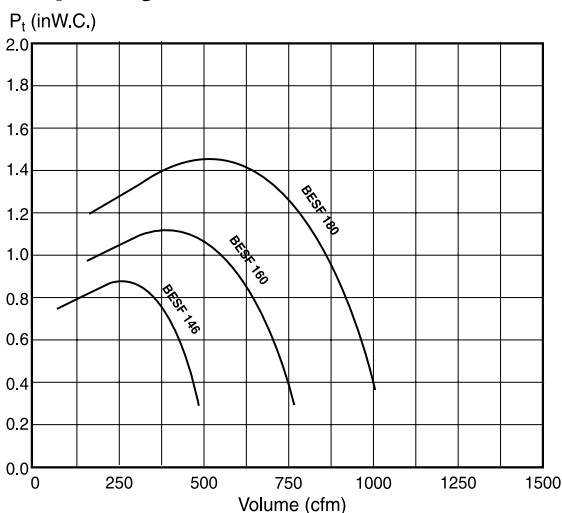
Specifications are subject to change without notice.

Specifications

| Model | | BESF 146 | BESF 160 | BESF 180 |
|-----------------|------|--------------------------------|----------|----------|
| Fan Type | | Centrifugal Impeller (F-Wheel) | | |
| Motor Type | | TEFC | | |
| Voltage | VAC | 1x120 | | |
| Amperage | | 1.2 | 2.9 | 5.8 |
| Motor Output | HP | 0.1 | 0.2 | 0.5 |
| | kW | 0.08 | 0.16 | 0.35 |
| RPM | | 1600 | | |
| Weight | lbs | 28 | 38 | 60 |
| | kg | 13 | 17 | 27 |
| Duct Connection | E in | 7 | 8 | 8 |
| | mm | 177 | 200 | 200 |
| Dimensions | A in | 13.60 | 14.57 | 16.15 |
| | mm | 345 | 370 | 410 |
| B | in | 11.62 | 12.60 | 13.98 |
| | mm | 295 | 320 | 355 |
| C | in | 7.88 | 9.26 | 9.26 |
| | mm | 200 | 235 | 235 |
| D | in | 4.33 | 5.52 | 7.68 |
| | mm | 110 | 140 | 195 |
| G | in | 13.78 | 15.75 | 15.75 |
| | mm | 350 | 400 | 400 |
| H | in | 6.50 | 7.10 | 7.88 |
| | mm | 165 | 180 | 200 |
| J | in | 7.88 | 8.27 | 9.26 |
| | mm | 200 | 210 | 235 |
| K | in | 4.33 | 5.12 | 5.12 |
| | mm | 110 | 130 | 130 |
| R | in | 13.60 | 14.57 | 16.15 |
| | mm | 345 | 370 | 410 |



Capacity



Sound Diagram

| Model | Lw dB | | | | | | | Lp DB (A) |
|----------|-------|-------|-------|--------|--------|--------|--------|-----------|
| | 125Hz | 250Hz | 500Hz | 1000Hz | 2000Hz | 4000Hz | 8000Hz | |
| BESF 146 | 48 | 48 | 48 | 41 | 38 | 35 | 32 | 40 |
| BESF 160 | 53 | 54 | 51 | 43 | 39 | 36 | 32 | 41 |
| BESF 180 | 55 | 60 | 53 | 46 | 41 | 36 | 32 | 47 |

Tolerance: +/-3 dB

Lw: Sound Power Level. Noise to surroundings.

Lp: Sound Pressure Level. 3 feet (1 m) from the center of the fan.

Note: A sound power level of 30 dB is equivalent to a voice at a very soft whisper. A sound power level of 70 dB is equivalent to a voice at conversational level.

